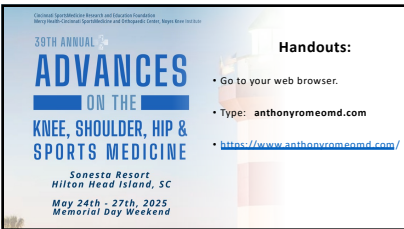
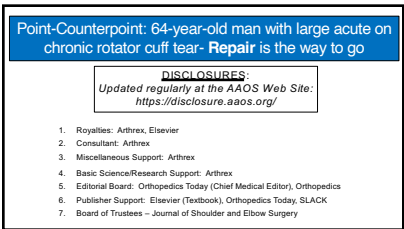


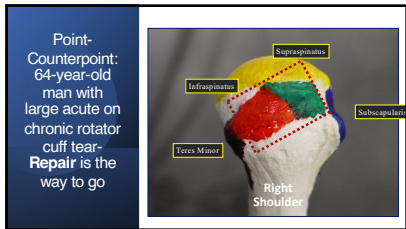
1



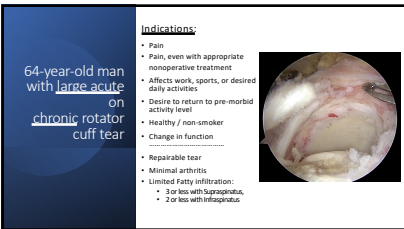
2



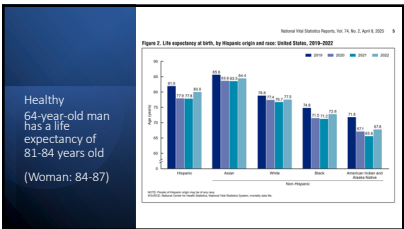
3



4



5



6

Copyright 1991 by The Journal of Bone and Joint Surgery, Philadelphia

1991 Repairs of the Rotator Cuff

CORRELATION OF FUNCTIONAL RESULTS WITH INTEGRITY OF THE CUFF*

BY DOUGLAS T. HARRYMAN, II, M.D., T. LAURENCE A. MACK, M.D., T. KEITH Y. WANG, M.D., T. SARAH E. JACKSON, R.P.T.T., MICHAEL L. RICHARDSON, M.D., T. AND FREDERICK A. MATTHEW, III, M.D., T. SEATTLE, WASHINGTON

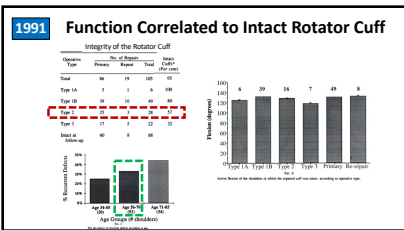
From the Shoulder and Elbow Service, Department of Orthopaedics, University of Washington, Seattle

FUNCTIONAL RESULTS ACCORDING TO OPERATIVE TYPE

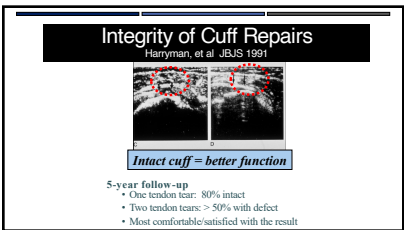
Average Active Motion at the Time of Follow-up (Degrees)

Operative Type	No. of Shoulders	Age at Repair† (Years)	External Rotation			Internal Rotation at 0 Degrees of Abduction‡
			At 0 Degrees of Abduction†	At 90 Degrees of Abduction†	At 0 Degrees of Abduction‡	
Type 1A	6	49 ± 13	126	38	68	79
Type 1B	25	47 ± 11	126	38	68	79
Type 2	25	46 ± 11	126	38	68	79
Type 3	25	46 ± 11	126	38	68	79

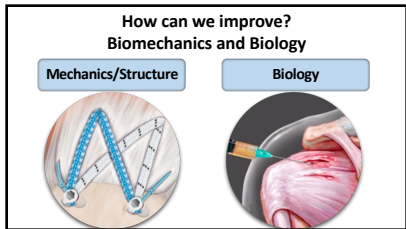
7



8



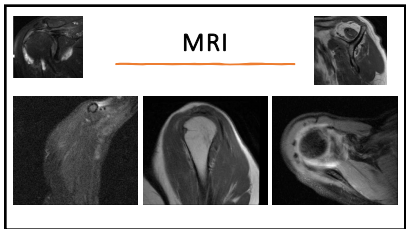
9



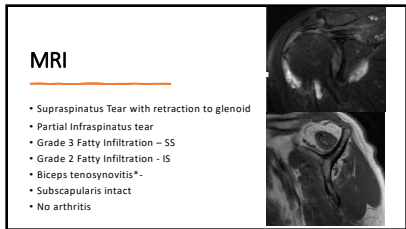
10



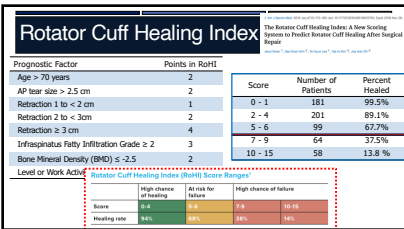
11



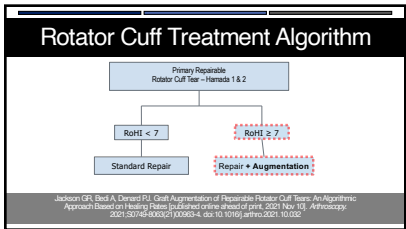
12



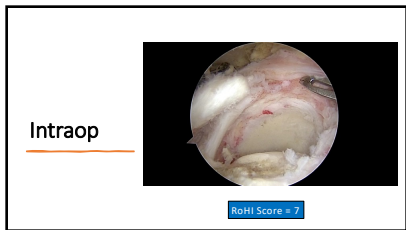
13



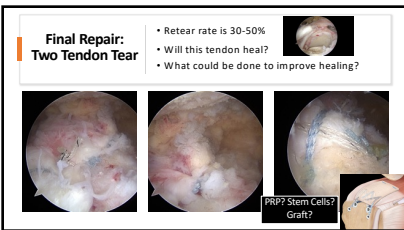
14



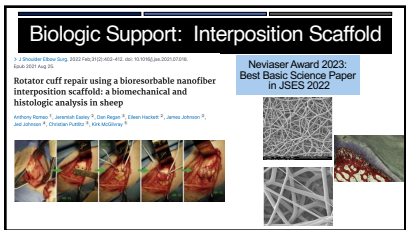
15



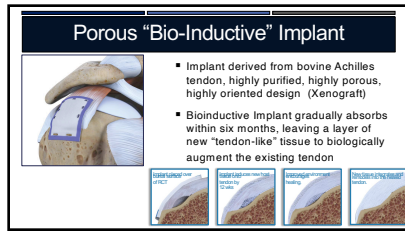
16



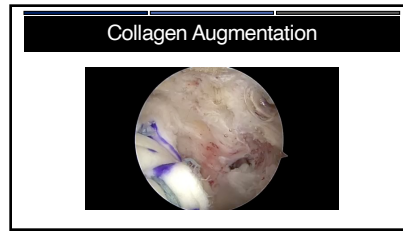
17



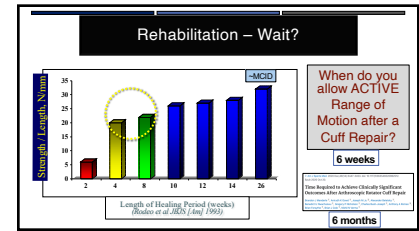
18



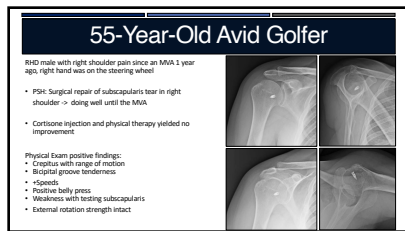
19



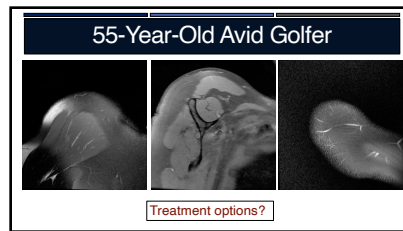
20



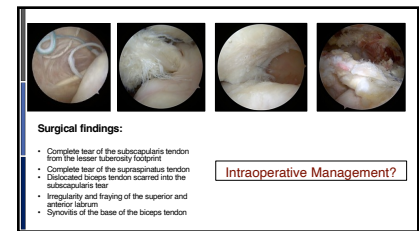
21



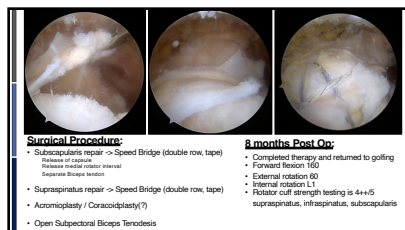
22



23



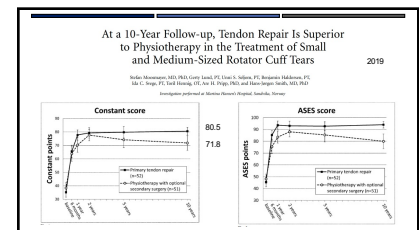
24



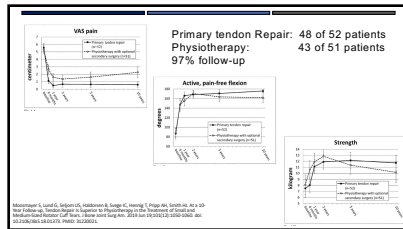
25



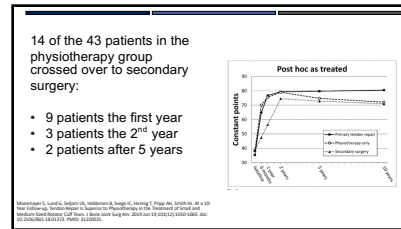
26



27



28

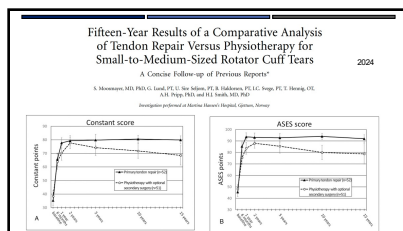


29

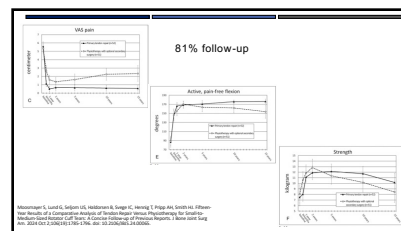
TABLE VI Sonographic Tear Size Change in 32 Unrepaired Rotator Cuff Tears from Baseline to the 10-Year Follow-up			
	Baseline*	5 Years*	10 Years*
Anterior-posterior plane	14.8 ± 6.0	19.3 ± 10.5	24.9 ± 14.2
Medial-lateral plane (retraction)	14.3 ± 7.0	17.4 ± 9.2	20.6 ± 11.3

41% of tears that were still unrepaired after 10 years showed a tear enlargement of ≥10 mm and a low Constant score of 63.9 points

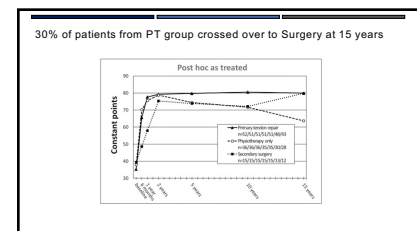
30



31



32



33

Mental, Emotional, Quality of Life Benefits			
Prospective factors affecting the quality of life after arthroscopic rotator cuff repair: a prospective study			
Results at 12 months, 18 months, 24 months, 30 months, 36 months, 42 months, 48 months, 54 months, 60 months, 66 months, 72 months, 78 months, 84 months, 90 months, 96 months, 102 months, 108 months, 114 months, 120 months			
Variable	12 months	18 months	24 months
VAS pain	1.0 (0.0)	1.0 (0.0)	1.0 (0.0)
Active pain-free flexion	1.0 (0.0)	1.0 (0.0)	1.0 (0.0)
Strength	1.0 (0.0)	1.0 (0.0)	1.0 (0.0)
Constant score	1.0 (0.0)	1.0 (0.0)	1.0 (0.0)
ASIS score	1.0 (0.0)	1.0 (0.0)	1.0 (0.0)

34

Low risk, High Reward

- Safe: < 1% major complications
- Technique: reliable, effective
- Recovery: Use of arm at 6 weeks
MMI: 9-12 months
- Rehabilitation: successful with cuff repair and healing

35

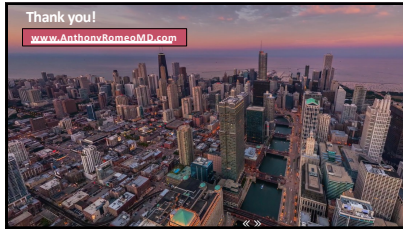
Summary:

- Surgical repair offers superior pain relief, function, and durability.
- Surgical repair is a low-risk, high-reward offer.
- Quality of life improved!

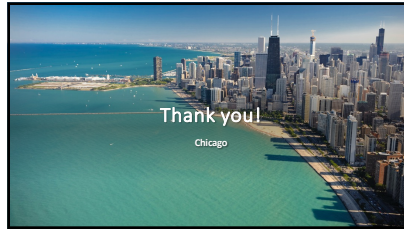
64-year-old man with large acute on chronic rotator cuff tear

Give this patient the best chance to stay active in work and sport, sleep pain-free, and thrive for decades – Surgery!

36



37



38